



CONTENTS

ASIA

- 05 **TAJ FALAKNUMA PALACE, HYDERABAD**
India
- 11 **LOTTE HOTEL HANOI**
Vietnam
- 17 **THE SOUTH BEACH SINGAPORE**
Singapore
- 23 **NOVOTEL YANGON MAX**
Myanmar



CHINA

- 31 **THE RITZ-CARLTON, CHENGDU**
China
 - 37 **THE ST. REGIS CHENGDU**
China
 - 43 **BANYAN TREE HUANGSHAN**
China
-



AMERICA

- 59 **PALACE HOTEL, A LUXURY COLLECTION HOTEL**
USA
 - 65 **ANDAZ MAUI AT WAILEA RESORT**
USA
-

EUROPE

- 73 **SCHLOSS ELMAU**
GERMANY
- 79 **HOTEL 7132, VALS SWITZERLAND**
SWITZERLAND



ASIA

TAJ FALAKNUMA PALACE , HYDERABAD



The former residence of the Nizam of Hyderabad, Falaknuma Palace has been rightfully leased by the Royal Family of Hyderabad to the Taj Group of Hotels Resorts and Palaces with Royal Family members having personally supervised part of the Palace's refurbishment. Guest can now experience the famed Nizam's hospitality which was once the sale preserve of royalty. The palace was built by the Prime minister of the 6th Nizam and the construction started in the year 1884 and ended in the year 1893, it took 10 years for the restoration of the Palace and opened its door as a hotel on 13th Nov 2010. 2000 feet above Hyderabad, Taj Falaknuma Palace, beautifully refurbished and lovingly restored rooms allow you to journey into the clouds and into the glided ages, where grandeur and excess is celebrated and savored in equal measure. Those who have reveled in its opulence have reveled in its large Venetian chandeliers, rare furniture, grand marble staircases and gurgling fountains, priceless statues, and objects d'art, stained-glass windows, unique sketches and murals encased in ornate frames, a world-class collection of crystal as well as the Mughal, Rajasthani and Japanese gardens personally conceived by the Nizam. The Palace Library, a replica of the one at Windsor Castle, is a collector's envy as it is home to the rarest of manuscripts, books and one of the most acclaimed collections of the Holy Quran in the country, all of which were selected and brought back by the Nizam himself.







Details

Country/Area
Category
Opened
Architect
Owner

India
Hotel Deluxe *****
13th November 2010
Andrea Palladio
Her Highness Princess Birgen Jah
Esra Yegane

Rooms
Product number

45 rooms and 15 suites
Toilet: CW668J/SW668J, CW875 NJ Omni

LOTTE HOTEL HANOI

LOTTE Hotel is the biggest hotel chain in South Korea and is becoming one of the Top 3 Asia Brand Hotel by 2018. In Vietnam, LOTTE Hotel has been operating 5-star LOTTE Legend Hotel Saigon and in September 2014, they had the grand opening of LOTTE Hotel Hanoi. LOTTE Hotel Hanoi is the true landmark of the city, connecting the Old Town where history is still kept alive and the New Business District, the symbol of Hanoi's future. The hotel is situated on the upper part of the magnificent 65-storey building LOTTE Center Hanoi, where the premium department stores, 258 luxurious serviced residences, best view observatory deck and a conveniently located hypermarket located. This building is not only the symbol of LOTTE Group in Vietnam, but also a famous tourist attraction and architectural landmark in Hanoi thanks to its Ao Dai inspired design. In such modern yet elegant settings, LOTTE Hotel Hanoi sets a new standard of luxury in the city. The service of luxurious 318 guests rooms, designed with motifs from the beautiful nature and elegant traditional patterns of Vietnam, brings the posh comfort to guests. The exclusive Club Floor offers the finest environment for business. The upscale restaurants cater refined dishes with an expansive view from a high-rise building. The lobby lounge and bar feature sophisticated design of together modernity and classical beauty, bringing fresh and exciting experiences to guests at different times of the day. The 1,680 m² fitness center and 1,200 m² spa area enhance the experience of guests from dynamic to comfortable relaxation. Finally, the banquet rooms of various sizes, all equipped with a state-of-the-art audio-visual system, are ideal venues for a full range of events, such as international conventions, business seminars, product-launch events, parties, weddings, and family gatherings.







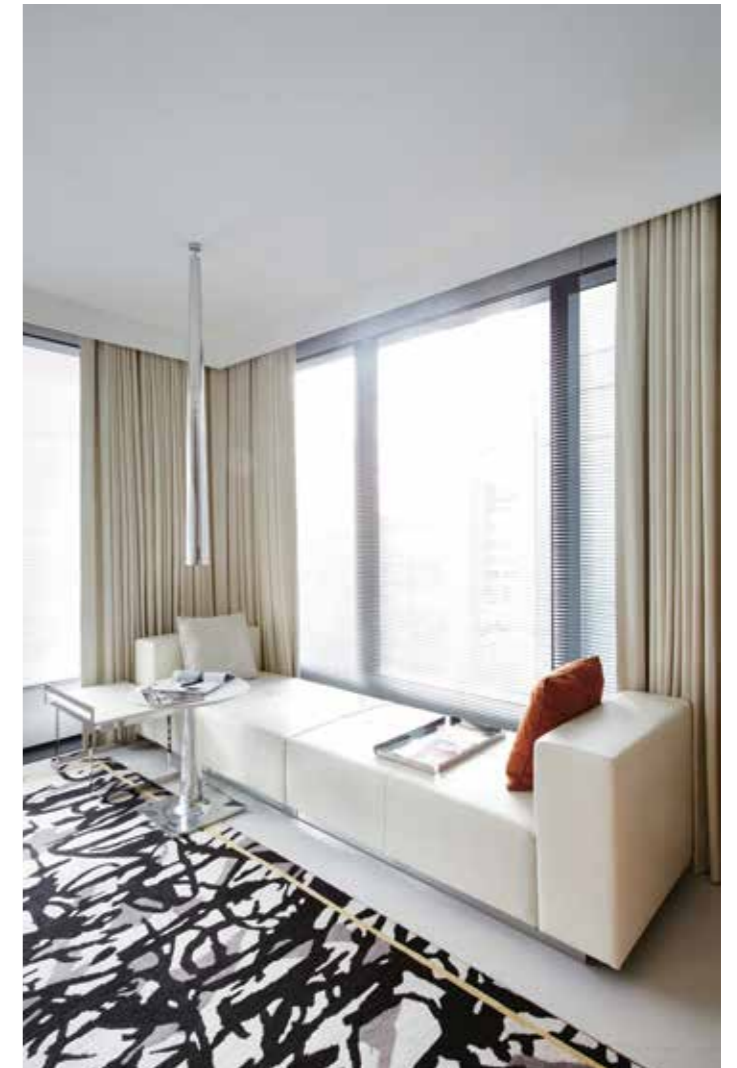
Details

Country/Area	Vietnam
Category	Hotel *****
Opened	September, 2014
Interior Designer	Wilson Associates; HBA
Owner	Lotte Corallis
Rooms	318
Product number	Toilet: TOTO NEOREST CS991TU/TCF9911A Washlet: TCF491K

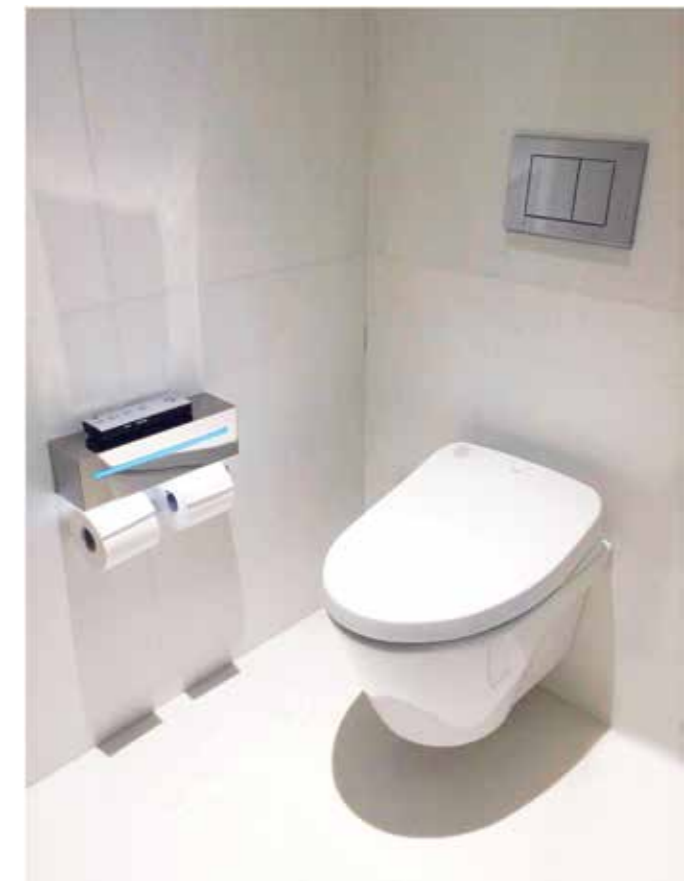


THE SOUTH BEACH SINGAPORE

The South Beach is a 654-room contemporary inspired H.I.P. (Highly individualized People and Places) hotel designed by French designer Philippe Starck, located in the hub of downtown Singapore. The latest development by City Development Limited (CDL) Singapore and IOI Corporation Berhad, the hotel boasts brilliant architecture by international award-winning firm Foster + Partners and leading design global from Aedas. Coupled with a private dining club, the hotel is part of a mixed-use contemporary and ecological sustainable development – South Beach, which comprises an area of over 34,000m². We believe the best design occurs at the intersection of old and new. The architecture cleverly integrates the heritage site formerly comprising three army blocks and the NCO Club, a favourite haunt for army, naval and air force offices famed for its Olympic-sized swimming pool. The hotel resides amidst a place of historical value, evoking a sense of pride and nostalgia. This fusion of old and new becomes essential in architectural literature, undoubtedly ranking among the architectural models of modern Singapore. There are many distinctive spaces in the hotel, including 43 imaginative social spaces and stylishly designed H.I.P rooms that offer a sanctuary of calm and comfort. With emphasis on imaginative social spaces to cater to the need for ‘alone togetherness’, The South Beach aims to further promote the luxury H.I.P. hotel concept to the region and set new hospitality standards by creating infinite experiences for and with you. The hotel aims to provide in-house guests a unique hospitality experiences in the luxuriously well-appointed guest rooms providing the latest integrated technological experience. Other amenities highlights include Butter Cabinets in selected guestrooms and a complimentary fully-stocked refreshment bar.







Details

Country/Area	Singapore
Category	Hotel *****
Opened	2015
Interior Designer	Philippe Starck
Owner	City Development Limited (CDL) Singapore and IOI Corporation Berhad
Rooms	654
Product number	Washlet: TCF4731A



NOVOTEL YANGON MAX

Novotel Yangon Max is the brand new five-star hotel located between Yangon International Airport and the historical downtown. The 366 spacious rooms have been stylishly designed to ensure maximum space, comfort and functionality. With 3 restaurants and 4 bars, Novotel Yangon Max offers a wide selection of food & beverages to suit different taste buds. Hotel facilities include a swimming pool, fitness center, spa, beauty salon, laundry, concierge, retail shops and babysitting service. The hotel is well-known for its grand ballroom with a 12-meter high ceiling and a seating capacity up to 700 guests banquet style. Other meeting facilities include 1 junior ballroom, 1 conference room, 1 Eureka meeting room and 5 meeting rooms. TOTO products have been nicely integrated within the interior design of the hotel allowing the guests to have a modern easy living experience.





Details

Country/Area	Myanmar
Category	Hotel *****
Opened	2015
Interior Designer	IIDA International Design Pte Ltd., Singapore
Owner	Max Myanmar Hotel Co., Ltd
Rooms	Total 366 rooms, including 49 Deluxe suites, 25 Executive Suites
Product number	TOTO NEOREST PKZ1800A



AN Z H T O



The Ritz-Carlton, Chengdu is located near the city's central Tianfu Square as the first luxury flagship hotel in the southwestern region of China by Ritz-Carlton management group. The design of the hotel is full of minimalism, which is inspired by two thousand years of rich history in Chengdu culture. A kind of classical beauty from the modern elements is naturally expressed by the details. The historic tea culture of Chengdu weaves its way through the guests' experiences of the hotel. The Ritz-Carlton, Chengdu offers guests a modern sophistication with traditional touches as well as memorable and diverse global dining opportunities at each of its three restaurants. Through the biggest terrace in town, a unique and initiate dining experience is provided of FLAIR lounge. Guests can also find relaxation and wellness at the 2,300 square meters full-floor luxury Ritz-Carlton spa and fitness center. With 353 guest rooms, 54 suites and one presidential suite, the luxury hotel features unmatched views of downtown Chengdu. The design concept is inspired by the traditional lane of Chengdu, and it integrates oriental taste with modern luxury. Not only the personal service, but also the influence of tea culture can be found throughout the luxury hotel. Lastly, TOTO's NEOREST series are equipped to offer every guest an intelligent comfortable stay brought by state-of-the-art technology.

THE RITZ-CARLTON, CHENGDU





Details

Country/Area
Category
Owner
Rooms
Product number

China
Hotel *****
MARRIOTT INTERNATIONAL INC.
353
Toilet: TOTO NEOREST CES9683JCS
Washlet: TCF6231CSV6



THE ST. REGIS CHENGDU





Defining elegance in the heart of the business district, The St. Regis Chengdu is located within steps of Tianfu Square and Chunxi Road. Boasting an iconic address in the ancient city, it is strategically placed near premier shopping and renowned restaurants. Meticulously decorated to impart timeless style, 279 guest rooms and suites unite custom furnishings with state-of-the-art amenities. Along with rare views of the city or Tianfu Square, signature St. Regis Butler services are available any time, day or night. Inspired by timeless elegance and Sichuan design elements, Deluxe rooms of the hotel inspire guests with richly tactile textiles, a refined neutral palette, and crimson accents. These engaging details flawlessly combine with iconic city or Tianfu Square views visible through floor-to-ceiling windows that open to reveal fresh breezes. Crown molding frames the gracious scene while a circular crystal chandelier illuminates the room's original artwork and bespoke touches. The captivating attention to detail continues in the expansive bathroom, which is separated from the bedroom by French-inspired doors and tiled in smooth marble, with a glittering chandelier as its centerpiece. The soft lighting serves to reveal a deep soaking bathtub, separate rainforest shower and dual vanities. A separate water closet, with smart toilet, ensures privacy. TOTO NEOREST series are equipped to deliver exceptional experiences.





Details

Country/Area
 Category
 Owner
 Rooms
 Product number

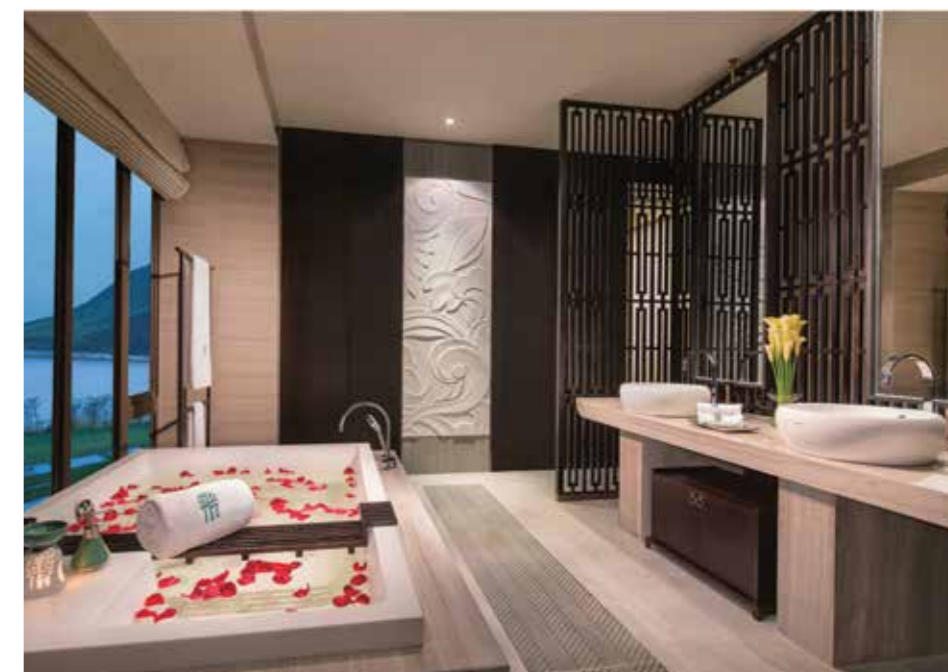
China
 Hotel *****
 Starwood
 279
 Toilet: TOTO NEOREST CES9683JCS

BANYAN TREE HUANGSHAN



In the old Xidi and Hongcun villages, just ten minutes from the resort, you can find traditional Chinese residences dating back to the Ming and Qing dynasty. Their unique combination of simple and exquisite architecture perfectly demonstrates the heritage of the Hui-style culture. As you wander along the village, you will be amazed by the beauty of its boundless hills and winding streams. The design of Banyan Tree Huangshan embodies the enchanting Hui-style's architecture inspired by traditional Chinese ink paintings. The wooden bamboo carvings found within the hotel tell ancient stories, while others depict the sheer beauty of Mount Huangshan. The wooden roof slopes with its white walls tipped by black scales; finishing in the traditional horse-head style found in the area, provide the resort with a signature local touch that blends in with its surrounding scenery. Banyan Tree Huangshan is equipped with state-of-the-art facilities. In addition to the poetically inspiring suites and villas, the award-winning Banyan Tree spa and Banyan Tree gallery are also not to be missed. The resort has all kinds of facilities. Not only the luxury suites and villas, but also the Banyan Tree spa and Banyan Tree gallery boutiques cannot be missed. In additions, guest rooms are all equipped with TOTO Washlet for unique, clean and comfortable experiences during the stay.





Details

Country/Area
 Category
 Owner
 Rooms
 Product number

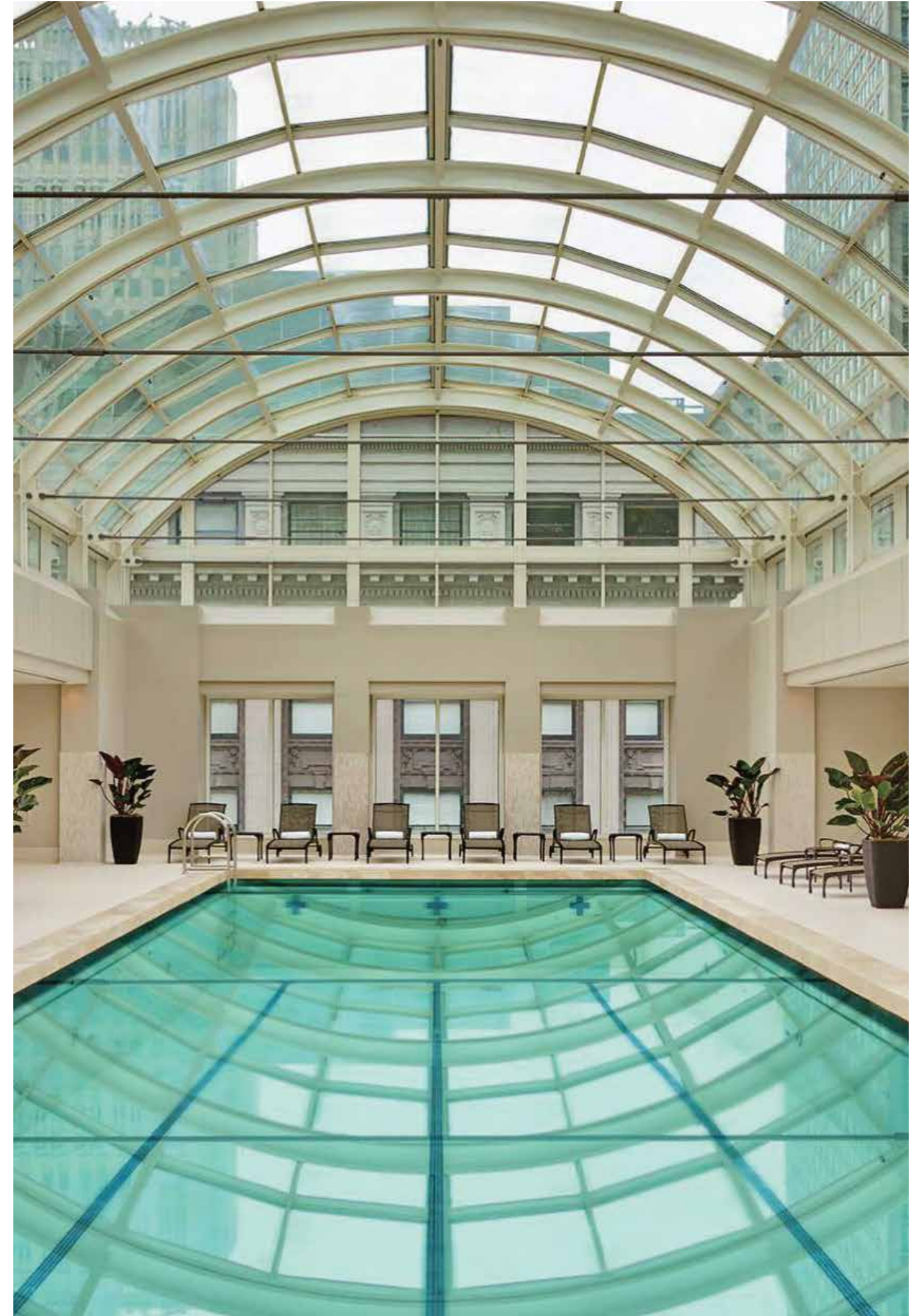
China
 Hotel & Resort
 Banyan Tree
 Hotel & Resort
 76
 Washlet: TCF6432CS



AFRICA

PALACE HOTEL, A LUXURY COLLECTION HOTEL

Indulge in luxury and hospitality on a grand scale at The Palace Hotel, a luxury Collection Hotel, San Francisco. A first in time and place. The Palace has been a retreat of sophistication since 1875. Experience elegant furnishings, contemporary amenities, distinctive restaurants, a beautiful sky-lit indoor pool and fitness center, all matched with unparalleled service. Centrally located in the heart of downtown San Francisco. The Palace is walking distance to the city's beloved attractions: The Ferry Building Marketplace, Embarcadero Waterfront, Chinatown, Union Square, designer boutique shopping, cultural museums, Michelin dining and iconic transportation. Recently renovated in 2015, the design of the hotel features original architecture and authentic elements paired with classically inspired, modern décor. The highlight of the hotel not to be missed are the iconic Garden Court restaurant and historic Pied Piper bar.





Details

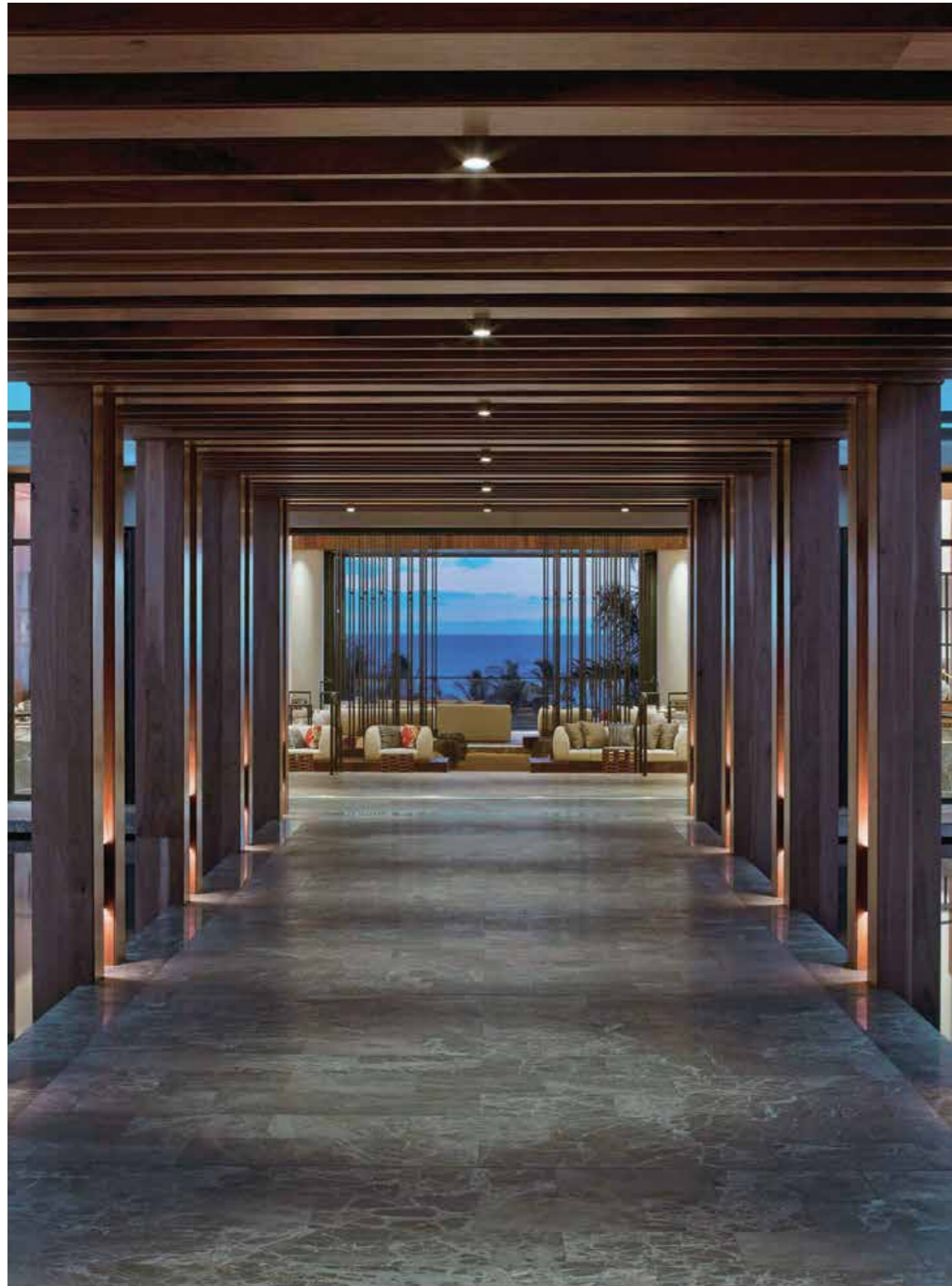
Country/Area	USA
Category	Hotel *****
Opened	2015
Designer/Architect	Beatrice Girelli, Indidesign
Owner	Kyo-Ya Hotels & Resorts LP
Rooms	556
Product number	Washlet: SW532



Andaz Maui at Wailea Resort is redefining luxury with a non-traditional approach. Situated on Maui's premier southwestern coastline in Wailea on Makapu Beach, this beachfront resort is designed for the discerning island traveller. The atmosphere emulates an upscale Hawaiian beach house that captures the spirit and feel of today's Hawaii. The Silver LEED certified oasis features luxurious guest rooms, suites and residential villa where guests can savour the delights of world-class dining at Ka'ana kitchen and Marimoto Maui. Indulge at 'Awili Spa & Salon, where you can custom blend your products for your treatments with your apothecary consultant or simply relax enjoying the oceanfront infinity pools. Named Travel + Leisure's It List for 2014's Best New Hotels, Andaz Maui at Wailea Resort awaits to offer you a refreshing alternative in Maui.

ANDAZ MAUI AT WAILEA RESORT





Details

Country/Area	USA
Category	Hotel & Resort
Opened	2013
Designer/Architect	Rockwell Group
Owner	Hyatt, Starwood Capital & Kobayashi Group
Rooms	297
Product number	Washlet: SW502



WORLD



SCHLOSS ELMAU

Schloss Elmau is located 100km south of Munich and 1,000m above sea level in the most stunning mountain valley of the Bavarian Alps. TOTO WASHLETs were added to all 47 suites at the retreat during extensive renovations completed in 2015. International guests are familiar with such shower toilets from frequent travel. Dietmar Muller-Elmau chose the original TOTO WAHLETs from Japan to provide outstanding comfort and hygiene to the hotel's international clientele who are familiar with such shower toilets from their frequent travels. The retreat hosted the heads of state of the G7 nations during the 2015 summit.

Politicians have always been frequent guests at this nearly 100-year old five-star hotel, where they meet the academics and philosophers for days of debates and discussion. Schloss Elmau is especially well-known for its top-class cultural events: Hotelier Dietmar Muller-Elmau invites guests to enjoy around 200 readings, film viewings and concerts each year.





Details

Country/Area	Germany
Category	Luxury hotel *****
Opened	2015
Designer	Dietmar Muller-Elmau
Architect	Hilmer & Sattler und Albrecht
Owner	Schloss Elmau GmbH & Co. KG
Rooms	47 rooms and suites
Product number	Toilet: NEOREST SE and MH toilets Washlet: EK WASHLETs

HOTEL 7132, VALS WITELAND

When Peter Zumthor built the thermal baths in 1996, the small mountain town of Vals became a mecca for architecture enthusiasts. Hotel 7132, named after Vals' postal code, intends to enhance this reputation even further. Gradual renovations on the hotel started in 2012. The management chose to work with internationally renowned architects, giving them free hand to design the rooms and suites as they wished. The new rooms and three suites designed by Kengo Kuma were just recently completed. Kuma installed NEOREST AC WASHLETs in the suites, which matched their simple elegance. The Japanese architect was, of course, familiar with the shower toilets and the many advantages they offer. Today, more and more European guests are also learning to appreciate the clean feeling they experience after using the WASHLET.







Details

Country/Area
Category
Year built
Renovated
Architect

Owner
Rooms
Product number

SWITZERLAND
Luxury hotel
1969 (hotel) 1996 (thermal bathe)
2012-2016
Tadao Ando, Kengo Kuma,
Peter Zumthor, Stucco Lustro,
Thom Mayne
Remo Stoffel
87 rooms and 3 suites
TOTO NEOREST AC WASHLET

TOTO



NEOREST AH



washLÉT



CONTEMPORARY





TOTO MUSEUM

"TOTO Museum", located in TOTO Headquarters in Japan, Kitakyushu officially opens to the public. The museum is established to greet the 100th anniversary of TOTO in 2017, aiming to publicize the development history of sanitary products and the manufacturing philosophy of TOTO coming down through the past to the present day. TOTO Museum showcases the products that have ever been presented in historical data library and showroom, including the toilet used in House of Councilors Meeting Hall and the jumbo toilet for sumo wrestlers, as well as the unit both model used in Hotel New Otani Tokyo during 1964 Tokyo Olympic Games. TOTO aims to build the museum into a platform through which TOTO Museum can communicate with visitors and customers. TOTO also wants to publicize sanitary ware technology and products, and spreads its brand philosophy.





GALLERY TOTO

This is a business trip, busy but full of fun. Traveling through different countries and cities and staying in different hotels, you can feel their distinctive cultures and meet new friends. Throughout the trip, airport is like a transfer station, it is where you start and where you end the trip. Of course, there will be a place where you get away from noise, relax and enjoy the real comfort. Cleaner, relaxed and enjoyable, like what Washlet brings.



Photo by DAICI ANO



Photo by DAICI ANO



Photo by DAICI ANO



Photo by DAICI ANO



Photo by DAICI ANO

Details

Country/Area	JAPAN
Category	Public Bathroom
Completion	Mid April 2015
Size	Approx. 138m ² (total area of restroom space)
Design	Klein Dytham architecture (KDa)
Equipment	Neorest AH/RH Restroom Item 01 Aqua Auto (authentic-faucets, Hydrocera (hand-dryers), Hydrocera /9uninal mats), etc



Mark Dytham / Astrid Klein

The Gallery TOTO at the Ngita International Airport is located in the NARITA SKY LOUNGE "WA", which connects the Terminal 2 main building to the Satellite (annex) and opened to public in Apr 2015. GALLERY TOTO is surrounded by glass on three sides, featuring individual booths and boasting the Japan first use of LED luminous textiles screens. Gallery TOTO was designed by Klein Dytham architecture (KDa). The concept is to tell the world about Japanese toilet culture and its advanced technology. Astrid Klein of KDa said, "GALLERY TOTO is both a toilet area and a showroom. It also gives foreign tourists leaving Japan a final and memorable experience as they board the plane to return to their countries. So, from the premise that a fun experience leads to good memories we decided to try to design a toilet that more than anything else wasn't a toilet – but a "gallery"." Mark Dytham also said that they wanted both the user of the space and those around it to be able to enjoy the gallery, so Gallery TOTO is a collection of individually unique toilet spaces which allows people using the toilets to retain their grace and dignity. But above all, it is the only toilet space of its kind in the world which, through the Japanese 'shoji' like LED screens, brings a smile to your face.





CONTACT US

TOTO ASIA OCEANIA PTE. LTD.

10 Eunoss Road 8 #12-07
Singapore Post Centre
Singapore 408600
Phone: +65-6744-6955
Fax: +65-6841-0819

TOTO INDIA INDUSTRIES PVT. LTD.

101, Kamla Executive Park
Opposite Vazir Glass Works
Andheri Kurla Road, Anheri (E)
Mumbai - 400059, Maharashtra, India
Phone: +91-22-2832-5741/42
Fax: +91-22-4022-3719

TOTO ASIA OCEANIA PTE. LTD.

MANILA BRANCH
Unit 1010, 10th Floor, Rufino Building
Ayala Avenue corner V.A Rufino Street
Makati City, 1226 Philippines
Phone: +63-2-887-6643
Fax: +63-2-887-4084

TOTO (THAILAND) CO., LTD.

BANGKOK BRANCH
G & 7th Floor Q House Ploenjit Building
598 Ploenchit road, Lumpini, Pathumwan
Bangkok 10330
Phone: +66-2-650-9925
Fax: +66-2-650-9923-4

TOTO ASIA OCEANIA PTE. LTD.

MIDDLE EAST BRANCH
LOB-1701-1702, Jebel Ali Free Zone
P.O. Box 261804, Dubai U.A.E
Phone: +971-4-886-5983
Fax: +971-4-886-5986

TOTO VIETNAM CO., LTD.

HANOI BRANCH
Lot F-1
Thang Long Industrial Park
Dong Anh, Hanoi Vietnam
Phone: +84-4-3881-1926
Fax: +84-4-3881-1928

TOTO ASIA OCEANIA PTE. LTD.

YANGON BRANCH
#303, Prime Hill Business Square,
No.60, Shwe Dagon Pagoda Road,
Dagon Township,
Yangon Myanmar
Contact: +95-1-382710
+95-1-382720
Fax: +95-1-382638