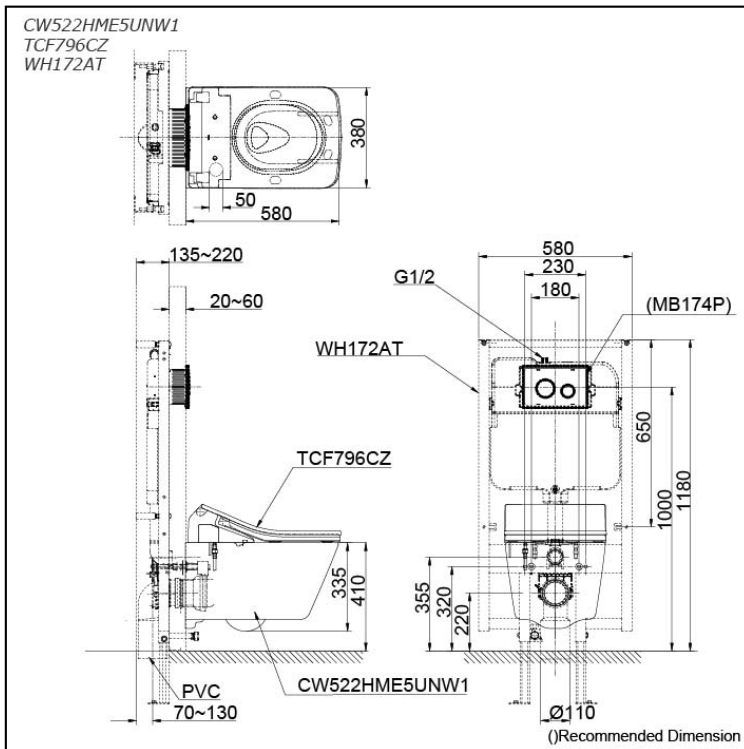


#### WALL HUNG TOILET (Combination)



## Features

- CEFIONTECT Technology: super smooth, ion barrier glazing for a clean toilet bowl
- TORNADO FLUSH for powerful flushing with less amount of water
- RIMLESS DESIGN bowl ensures easy cleaning and ultimate hygiene
- EWATER+ keeps nozzle clean with sanitizing effect against bacterial
- Fully equipped with rear, front and oscillating & pulsating cleansing function
- Temperature control HEATED SEAT
- PREMIST a fine spray of mist making it difficult for dirt to adhere
- Soft closing seat and cover

EWATER+ is made from tap water by electrolyzed chloride ion. After use, it returns back to ordinary state of water

## Specifications

CW522HME5U  
NW1:

Flush System: TORNADO FLUSH

Water Use: 4.5L / 3L

Rough-in: H=220

Bowl Shape: Square Shape

Water Pressure: 0.05MPa~0.75MPa

Size: 380W x 580D x 335H mm

TCF796CZ:

Power Rating: 220~240V , 50/60Hz ,  
832~843W

Length of Power  
Cord: 0.9 m

Size: 383W x 579D x 146H mm

## Parts description

Seat & Cover and fittings are not included

- **CW522HME5UNW1**  
Square Shape Wall Hung Closet Bowl (P-Trap) with Concealed feature, hiding all wiring inside the bowl
- **TCF796CZ**  
Concealed WASHLET SX
- **WH172AT**  
Concealed Tank (4.5L / 3L)

### Optional Parts

- MB174P  
Flush Panel

### NOTE

- **DO NOT COUPLE THIS WC WITH FLUSH VALVE**

## Colors

White